



*shading system for
terrace and wintergarden*



slide
freely system

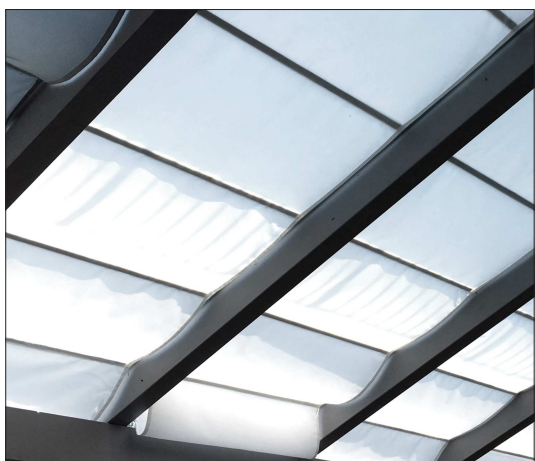
HAND

made
in
Germany





internal static →
assembling **between** the rafter



external static →
assembling **under** the rafter

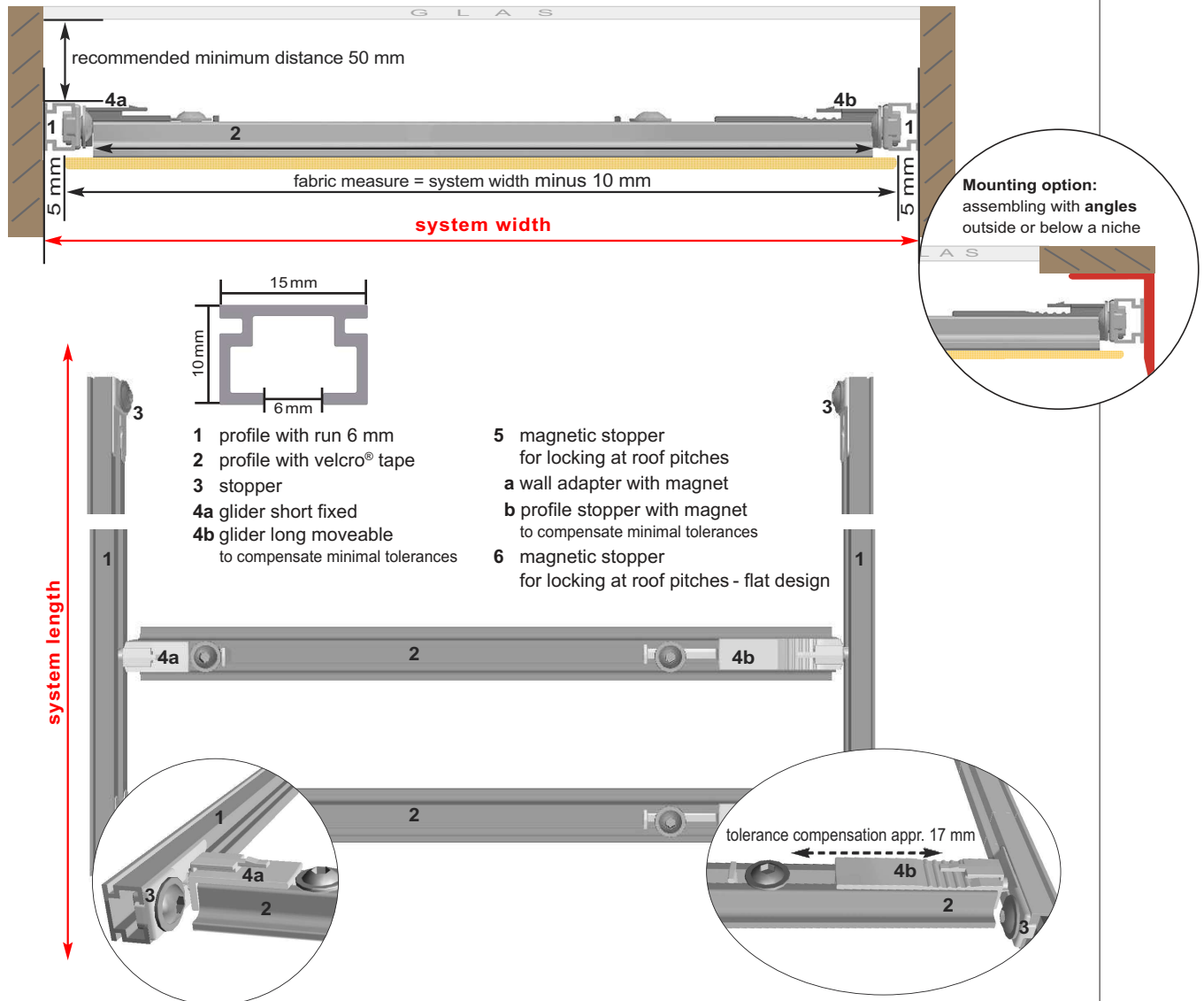


Technical informations:

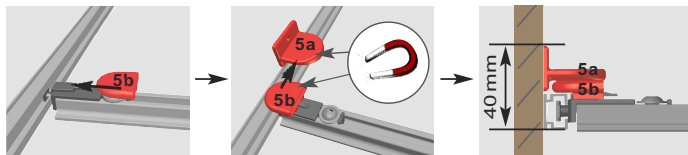
- for wintergarden / terrace roof with internal or external static
- plafond - roof pitches till max. 10°
- System size: width max. 1500 mm / length max. 6000 mm
- design variety - each field can be equipped individually
- Available colors:
aluminium profile: white, anthracite, alu look - further colors on request
alu profile with velcro® tape: white, alu look, accessories in matching colors
- All used plastics are uv-resistant.



In strong wind or storm the purchaser shall be individually responsible for the adequate protection of the sunola systems. In any warranty claims, please see our terms and conditions on www.sunola.de.

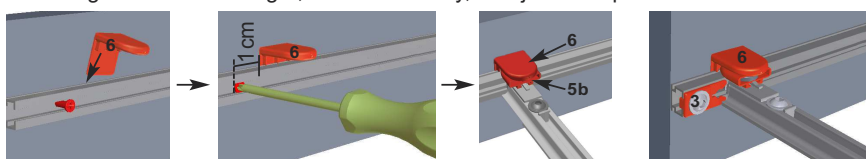


magnetic stopper for locking at roof pitches
(included)

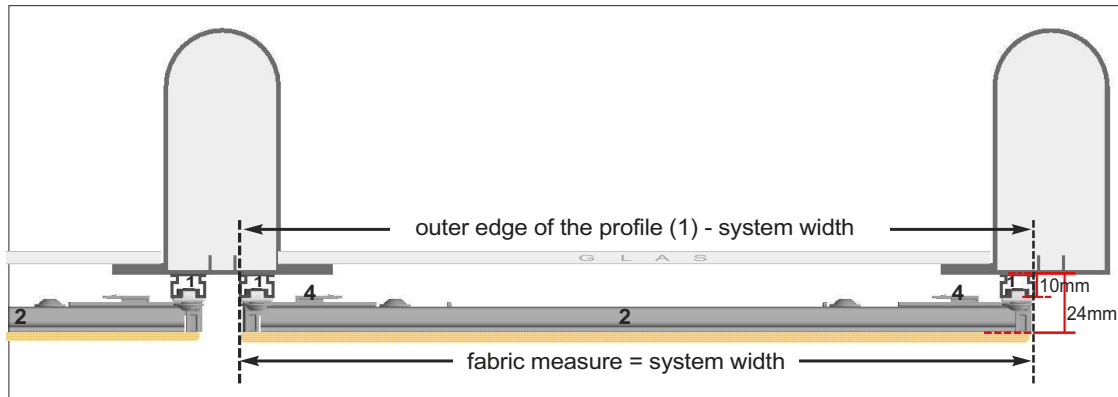


Optional: stopper set with magnet flat design

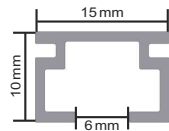
Advantage: low overall height, faster assembly, readjustment possible



Tip:
Mount the magnetic holder (6) in the near of the endstopper (3) for a faster opening and closing of the system!


View of the top:


Please note that the gliders (4) must be fixed (a) at one side and moveably (b) at the other side!



- 1 profile with run 6 mm
- 2 profile with velcro® tape
- 3 stopper
- 4a glider fixed
- 4b glider moveable
to compensate minimal tolerances

