



*shading system for
terrace and wintergarden*



system
motorized

M-TRACK

made
in
Germany





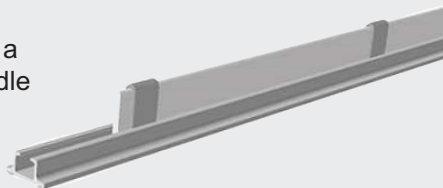
system width 750 mm at least till max. 4000 mm

system length max. 6000 mm

pleat distance appr. 400 mm

→ An additional guiding rail (middle rail) must be used for system widths more than 2000 mm.

Optionally, the velcro® profile can be supported with a stabilising profile, if it is not possible to mount a middle guiding rail (up to max. 2700 mm).



- for wintergarden and indoor areas - roof pitches till 45°

- straight or bent with radius 350 mm at least

- easy installation with quick release latch

- electrical operating - also for higher rooms

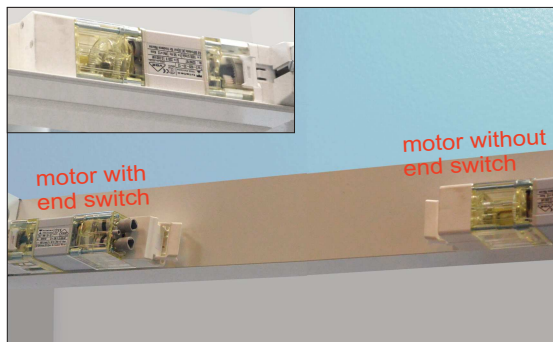
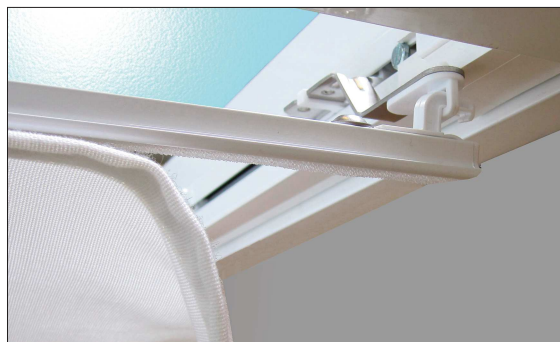
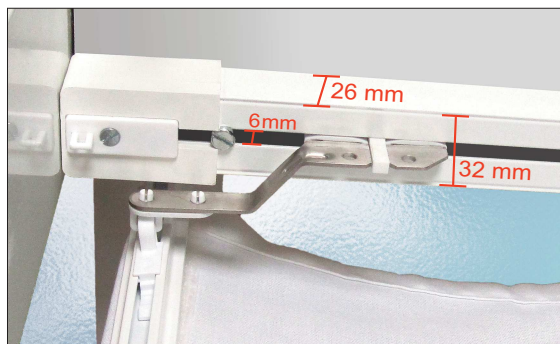
- Available colors:

guiding rail: white RAL 9016, alu anodised EV1 (further colors on request for an extra charge)

alu profile with velcro® tape: white, alu look

accessories in matching colors

- All used plastics are uv-resistant.



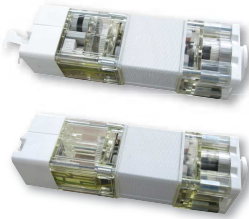


The following motors are used:

motor tandem

(motor with end switch + motor without end switch)

230 V - 30W, 35W, 45W, 65W



The used motor depends on

- **system size**
- **fabric weight**
- **inclination**

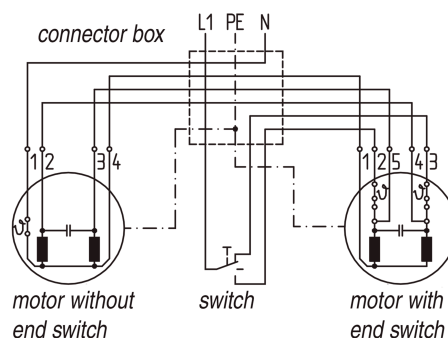
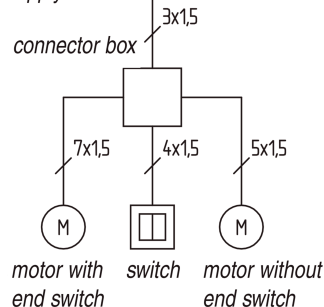


Please note that the motor is delivered without plug and transmitter. The motor is preset at ready made systems. Test cable / test plug available on request.



Connexions and supply lines have to be passed on site by authorized electricians according to VDE (German Electrical Engineering Association) and local EVU (electric supply company) instructions. For controls of two and more motors a group control is required. Cable laying plans and wiring diagrams for group and central controls as well as remote controls can be submitted on request. Switch off unused lines and systems before you connect the motor. Place push-buttons above a height of 1,5 m near the system. Allowed running periods and torques have to correspond with the motor's technical data. In order to avoid backing ups of condensers of running motors, parallel connexion of two or more motors at one exit is prohibited. For decoupling purposes a separate contact for each direction of rotation is required. Use only mechanically or electrically locked switches and push-buttons. Switches and controls may not permit concurrent up and down operation! The time to change the running direction from up/down has to be at a minimum of 0,5 seconds. This applies also for programmable control devices.

supply line 230V/50Hz, 110V/60Hz



M-TRACK



system motorized



Sunola is a division of:



Nölle Kunststofftechnik GmbH · Im Schlahbruch 20-22 · D-59872 Meschede
Tel. +49 291 9912 0 · Fax +49 291 991210 · E-mail: info@nodeko.de · www.sunola.de

made
in
Germany